

CRONO

2026 COLLECTION

CYCLING SHOES
HANDMADE WITH HEART
BY FABBRICA CRONO



They are worth the challenges,
the sweat, the mud on your face.

They are worth the innovation,
the craftsmanship,
and the attention to detail.

They are worth the respect for the road,
for those who pedal,
and for the environment.

We make shoes designed for people who
love cycling. For those who seek not only
performance, but journey, experience,
passion.

CRONOS
WORTH

CRONO

BUILDING GREAT PRODUCTS RESPECTING ALL: IT STARTS HERE.

THE CRONO MANIFESTO

A message from our team

▲ At Fabbrica CRONO, we believe creating exceptional products is worth it, and that goes beyond just style and function. It's worth it to do this in a way that respects human values, protects our environment, and prioritizes the well-being of our customers and employees. It's worth producing here in Italy, where shoemakers with 50 years of experience craft excellence.

Vision and passion drive our worthwhile process

▲ Our design, technology, and skilled workforce are the driving force behind our success. We wouldn't be here without a clear vision, a constant flow of creativity, and the unwavering desire to improve every single day. This dedication makes every step of the process worth it.

Sustainable practices for a brighter, worthwhile future

▲ We stand by our principles. It's worth using eco-friendly materials for our shoe packaging, so we choose FSC-certified cardboard. This ensures the raw materials come from responsibly managed forests, meeting strict environmental, social, and economic standards.

Green energy: powering our worthwhile future

▲ Our commitment to sustainability extends beyond packaging. We utilize certified green energy from renewable sources, producing 50% of the energy we need. Any additional energy required comes from other renewable sources. This dedication to a sustainable future makes every step worth it.

Respecting our people, respecting our craft: it's worth the investment

▲ We're fortunate to have a team of skilled craftspeople who share our passion for shoemaking. Providing a safe and respectful working environment, using only the best materials free from harmful substances, is worth the investment. While not necessarily the cheapest, we believe this approach is the right path towards a healthy planet and a thriving society.

Products made with heart: it's worth every step

▲ Our goal isn't to get rich; it's to offer exceptional footwear built with experience, skill, and dedication by our talented team. We're proud of what we do, and we hope you'll appreciate the worth we pour into every pair of shoes we create.

HANDMADE WITH HEART IN ITALY

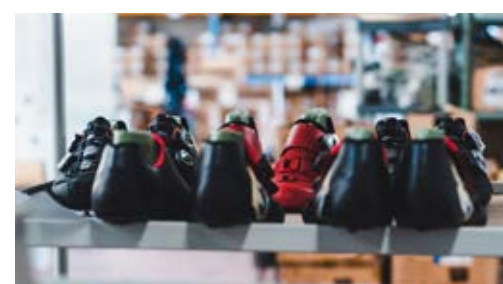
BY
FABBRICA
CRONO



We are a small, dedicated team—small enough to adapt to our customers' needs, and we are passionate about cycling.



SINCE 1973



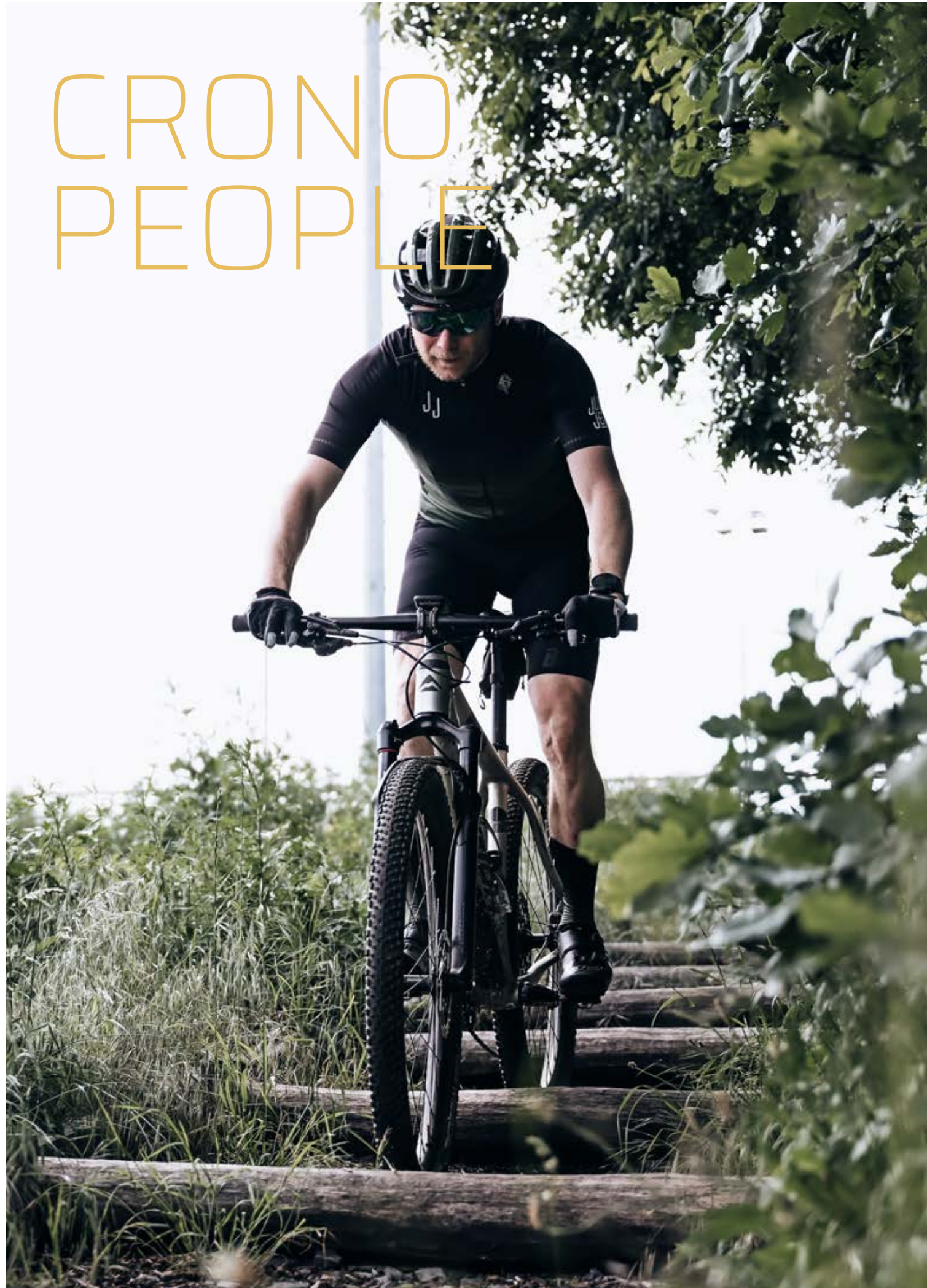
▲ We believe in simplicity and focus. We love cycling and aim to make cycling shoes that elevate every ride.

▲ Leveraging over 50 years of expertise, our skilled artisans meticulously design and produce each pair, ensuring unparalleled comfort, performance, and durability. Beyond exceptional products, we're dedicated to outstanding customer care.

▲ **No distractions, just pure cycling passion.**



CRONO PEOPLE



DRIVEN BY
PASSION FOR
CYCLING



Our ambassadors embody the spirit of sports, living and breathing their passion daily, not just on weekends. It's a fundamental part of who they are and their identity.

RIDE AS YOU ARE

ROAD FULL CARBON SOLE

Full Carbon Sole with 6 Interwoven Layers. Thanks to this the shoes saves weight and delivers increased stiffness transmitting every watt directly onto the pedals.

RIGIDITY —  10 +

CRONO

Replaceable heel

High ventilation system

Rubber tip protection



ROAD CARBOCOMP SOLE

Carbon composite sole and reinforced nylon. Lightweight and responsive, provides efficient power transfer without sacrificing comfort.

RIGIDITY —  8 +

CRONO

Anti-torque reinforced area

High ventilation system



MTB CARBOCOMP SOLE

Carbon composite sole and reinforced nylon. Lightweight and responsive, it guarantees efficient power transfer without sacrificing comfort. It provides secure footing on uneven paths that require walking with a bike.

RIGIDITY —  8 +

CRONO

Design for maximum discharge of dirt

Special Grip Area

Reinforced bearing for stud

Increased tip to gain grip



VIBRAM® WOLFTRAXW SOLE

This outer sole, SPD ready, is rigid for efficient pedalling, but it's also flexible enough for walking. Its functional design and special rubber compounds provide superior grip and traction when walking.

RIGIDITY —  6 +



Sharp lugs to empower traction and braking

Flat area for grip and stability on pedal

Optimized shape to easy clip IN/OUT



MICHELIN® OUTDOOR SOLE

The MICHELIN® Outdoor quality sole guarantees comfort and grip in all conditions and also for everyday use.

RIGIDITY —  5 +



Traction and grip on soft and hard terrains

Grip and stability on pedal iron spikes



MULTI CONTACT CLOSURE SYSTEM

MULTI CONTACT CLOSURE SYSTEM

▲ HOW IT WORKS

The MULTI CONTACT CLOSURE SYSTEM is a double BOA® closure system that works in synergy with each other, adapting to the different morphologies of the feet for optimal comfort.

The upper closure distributes the traction of the first closure band of the shoe on 2 VECTORS, one for typical containment between the ankle and the arch of the foot, the second which tightens the instep towards the heel. In this way, the foot always remains perfectly wrapped and positioned, guaranteeing an optimal grip in the heel area, also during maximum power efforts.

With MULTI CONTACT CLOSURE SYSTEM you will transmit all your power to the bike.



MAXIMUM
POWER
TRANSMISSION



BENEFITS:

- PERFECT FIT
- MAXIMUM POWER
- COMFORT
- PERFORMANCE

The Multi-Contact Closure System improves pedalling and increases power output because the foot stays in the correct position.

It provides a locked-in feel yet increased comfort. The system adapts to the foot without any increased pressure points.

The following models benefit from different versions of the system: 1-Series, 2.5-Series, 3.5-Series, 3-Series.



CRONO

ROAD LINE 2026

CASETS
WORTH

ROAD



CR1

Carbocomp Sole version

▲ SIZES

37 | 38 | 39 | 40 | 41 | 41,5 | 42 | 42,5 | 43 | 43,5 | 44 | 44,5 | 45 | 45,5 | 46 | 47 | 48

▲ WEIGHT 280 g

▲ RIGIDITY



Full Carbon Sole version

▲ SIZES

37 | 38 | 39 | 40 | 41 | 41,5 | 42 | 42,5 | 43 | 43,5 | 44 | 44,5 | 45 | 45,5 | 46

▲ WEIGHT 260 g

▲ RIGIDITY



BOA®

▲ The super-light CR1 transmits every watt through the 6-layer woven carbon sole directly onto the pedals. The anti-slip lining keeps the foot in the correct position for increased performance and comfort. We laser-designed the side vents to increase the ventilation, which we combine with our exclusive MULTICONTACT CLOSURE SYSTEM. The Multi-Contact Closure System distributes the pressure over eight different points. The foot remains in a stable and efficient position and with increased comfort. Two BOA® Li2 come with a coated replaceable steel adjustment wire. Easy and quick to micro-adjust also while riding.

▲ ROAD CARBOCOMP SOLE

Lightweight and responsive, our carbon fiber composite sole provides efficient power transfer without sacrificing comfort.

▲ FULL CARBON SOLE

Totally carbon sole composed of 6 intertwined layers. Thanks to this sole the CR1 transmits every watt directly onto the pedals.

▲ NEW BOA® Li2

Dial in a perfect, powerful fit with a micro-adjustable, low-profile design.

▲ NO TONGUE MORE COMFORT

Without internal tongue there are no annoying thicknesses.

▲ HIGH TRANSPIRATION

Special aeration holes on the upper to keep the feet fresh.

▲ FITTING

Slim fit to satisfy the very demanding customers.



FULL CARBON SOLE

CARBOCOMP SOLE



CR1 BLACK



CR1 RED



CR1 WHITE



CR1 BLUE METAL



▲ MULTICONTACT CLOSURE SYSTEM

It improves pedalling and increases power output because the foot stays in the correct position. It provides a locked-in feel yet increased comfort. The system adapts to the foot without any increased pressure points.

BENEFITS:

- PERFECT FIT
- MAXIMUM POWER
- COMFORT AND PERFORMANCE

NEW 2026

ROAD

CR2

Carbocomp Sole version

▲ SIZES

37 | 38 | 39 | 40 | 41 | 41,5 | 42 | 42,5 | 43 | 43,5 | 44 | 44,5 | 45 | 45,5 | 46 | 47 | 48

▲ WEIGHT

285 g

▲ RIGIDITY



Full Carbon Sole version

▲ SIZES

37 | 38 | 39 | 40 | 41 | 41,5 | 42 | 42,5 | 43 | 43,5 | 44 | 44,5 | 45 | 45,5 | 46

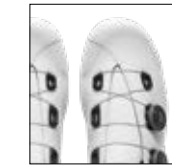
▲ WEIGHT 250 g

▲ RIGIDITY



BOA®

▲ Crono CR2 comes with a double BOA® Fit System for precise, easy and fast adjustment in an elegant design with clean and modern lines. All BOA® Fit systems offer superior function compared to other systems in all conditions. The BOA® Fit System parts are guaranteed for the shoe's life and are easily serviceable. For the best comfort, we use highly breathable microfiber in two colours for the upper part. Also, thanks to the added laser-made ventilation holes. We make the heel cup in rigid TPU for protection. The heel's inner part has an anti-slip lining to ensure maximum alignment while pedalling.



▲ FITTING: ERGO FIT

Our new Ergo Fit provides a wider toe box, which improves the foot hold and comfort. The extra freedom of movement is essential during long rides or in high-temperature conditions



▲ SOCK-LIKE FIT

Sock-like fit with our tongue-free design.



▲ HIGH TRANSPIRATION

Special aeration holes on the upper to keep the feet fresh.



▲ ROAD CARBOCOMP SOLE

Carbon composite sole and reinforced nylon. Lightweight and responsive, provides efficient power transfer without sacrificing comfort.

▲ ROAD FULL CARBON SOLE

Full Carbon Sole with 6 Interwoven Layers. Thanks to this the shoes saves weight and delivers increased stiffness transmitting every watt directly onto the pedals.



CARBOCOMP SOLE

FULL CARBON SOLE



CR2 BLACK



CR2 WHITE

Replaceable heel

High ventilation system

Rubber tip protection



ROAD

CR2.5

▲ SIZES

37 | 38 | 39 | 40 | 41 | 41,5 | 42 | 42,5 | 43 | 43,5 |
44 | 44,5 | 45 | 45,5 | 46 | 47 | 48

▲ WEIGHT

285 g

▲ SOLE

ROAD CARBOCOMP

▲ FITTING

Comfort

▲ RIGIDITY



BOA®

▲ The shoe features the CRONO ARCH WRAP SYSTEM, an innovative upper design that cradles the arch independently, optimizing foot support and comfort. Combined with a rigid construction and BOA® Fit System L6 closure, this shoe delivers exceptional power transfer and performance.



▲ SOCK-LIKE FIT

Sock-like fit with our tongue-free design.



▲ HIGH TRANSPIRATION

Special aeration holes on the upper to keep the feet fresh.



▲ ARCH WRAP SYSTEM

The Crono Arch Wrap System (with BOA® Fit System L6 locking system) distributes pressure independently for comfort and efficient pedalling.



▲ ROAD CARBOCOMP SOLE

Carbon composite sole and reinforced nylon. Lightweight and responsive, provides efficient power transfer without sacrificing comfort.



CR2.5 BLACK



CR2.5 WHITE



CR2.5 GREY



▲ MULTICONTACT CLOSURE SYSTEM

It improves pedalling and increases power output because the foot stays in the correct position. It provides a locked-in feel yet increased comfort. The system adapts to the foot without any increased pressure points.

BENEFITS:

- PERFECT FIT
- MAXIMUM POWER
- COMFORT AND PERFORMANCE



ROAD

CK3

▲ SIZES

37 | 38 | 39 | 40 | 41 | 41,5 | 42 | 42,5 | 43 | 43,5 | 44 | 44,5 | 45 | 45,5 | 46 | 47 | 48

▲ WEIGHT

295 g

▲ SOLE

ROAD CARBOCOMP

▲ FITTING

Slim fit to satisfy the very demanding customers.

▲ RIGIDITY



BOA®

▲ A shoe loaded with features, built with a technical Knit fabric made from a particular intertwining of multi-layer polyester yarns. That makes the shoe not only light but also more breathable and comfortable. The characteristic looks set it apart from other models in a fresh and elegant style. The upper's internal part wraps independently around the foot's arch without affecting the position and comfort of the rest of the foot. The BOA® Fit System L6 closure system is easy to adjust for perfect comfort and fit.

▲ ROAD CARBOCOMP SOLE

Lightweight and responsive, our carbon fiber composite sole provides efficient power transfer without sacrificing comfort.

▲ NO TONGUE MORE COMFORT

Without internal tongue there are no annoying thicknesses.

▲ LIGHT AND BREATHABLE

The special construction material of the upper makes it light and breathable.

▲ BOA® FIT SYSTEM L6

BOA® Fit System L6 locking system.

▲ ARCH WRAP SYSTEM

The Crono Arch Wrap System (with BOA® Fit System L6 locking system) distributes pressure independently for comfort and efficient pedalling.



▲ KNIT CONSTRUCTION

The knit is a special multi-layered weave of yarn that makes the shoe breathable and particularly comfortable.



CK3



▲ MULTICONTACT CLOSURE SYSTEM

It improves pedalling and increases power output because the foot stays in the correct position. It provides a locked-in feel yet increased comfort. The system adapts to the foot without any increased pressure points.

BENEFITS:

- PERFECT FIT
- MAXIMUM POWER
- COMFORT AND PERFORMANCE

ROAD

CR3

▲ SIZES

37 | 38 | 39 | 40 | 41 | 41,5 | 42 | 42,5 | 43 | 43,5 |
44 | 44,5 | 45 | 45,5 | 46 | 47 | 48

▲ WEIGHT

295 g

▲ SOLE

ROAD CARBOCOMP

▲ FITTING

Comfort

▲ RIGIDITY



BOA®



▲ The CR3 is one of the most popular models of the CRONO range. The New version comes with the advantages of the MULTI CONTACT CLOSURE SYSTEM. Optimal breathability is obtained thanks to a large number of ventilation holes. The closure BOA L6 Fitsystem is installed in the upper flap to guarantee excellent comfort, ensuring that the foot stays anchored to the sole with a firm heel grip. Total control at a very affordable price.

▲ ROAD CARBOCOMP SOLE

Lightweight and responsive, our carbon fiber composite sole provides efficient power transfer without sacrificing comfort.

▲ NO TONGUE MORE COMFORT

Without internal tongue there are no annoying thicknesses.

▲ SPECIAL PROFILE

Plastic heel with high restraining profile.

▲ BOA® Fit System L6

BOA® Fit System L6 locking system.

▲ HIGH TRANSPARATION

Special aeration holes on the upper to keep the feet fresh.



CR3 BLACK/SILVER



CR3 WHITE



▲ MULTICONTACT CLOSURE SYSTEM

It improves pedalling and increases power output because the foot stays in the correct position. It provides a locked-in feel yet increased comfort. The system adapts to the foot without any increased pressure points.

BENEFITS:

- PERFECT FIT
- MAXIMUM POWER
- COMFORT AND PERFORMANCE

ROAD

CR4

▲ SIZES

37 | 38 | 39 | 40 | 41 | 41,5 | 42 | 42,5 | 43 | 43,5 |
44 | 44,5 | 45 | 45,5 | 46 | 47 | 48

▲ WEIGHT

285 g

▲ SOLE

ROAD CARBOCOMP

▲ FITTING

Comfort fit.

▲ RIGIDITY



▲ The innovative design of the CR4 uses a double Velcro fastening which wraps around the foot. The two straps adjust the upper and lower part of the shoe separately for a snug and comfortable fit. Highly breathable and scratch-resistant material makes the shoe lighter and more robust. The CR4 is an affordable shoe for riders who seek simplicity and lightness in a modern shape.

▲ VELCRO WRAPS

Double Velcro fastening wraps around the foot to adjust the upper and lower part of the shoe.

▲ SPECIAL PROFILE

Plastic heel with high restraining profile.

▲ SUPER GRIP LINING

"Cat tongue" lining to avoid slipping.

▲ ROAD CARBOCOMP SOLE

Lightweight and responsive, our carbon fiber composite sole provides efficient power transfer without sacrificing comfort.



CR4 BLACK



CR4 WHITE



ROAD

CV1

Carbocomp Sole version

▲ SIZES

37 | 38 | 39 | 40 | 41 | 41,5 | 42 | 42,5 | 43 | 43,5 |
44 | 44,5 | 45 | 45,5 | 46 | 47 | 48

▲ WEIGHT 280 g

▲ RIGIDITY



Full Carbon Sole version

▲ SIZES

37 | 38 | 39 | 40 | 41 | 41,5 | 42 | 42,5 | 43 | 43,5 |
44 | 44,5 | 45 | 45,5 | 46

▲ WEIGHT 260 g

▲ RIGIDITY



▲ Entirely handmade in Italy by Fabbrica Crono with high quality microfiber, the Crono CV1 is a technical shoe with a unique vintage look, the use of the lace enhances the characteristics of the past even more, a mix of tradition and technology thanks to the specific molds used. The attention to detail and clean lines make this vintage cycling shoe a product to be envied by your friends. Perfect for any L'Eroica-style event!

▲ ROAD CARBOCOMP SOLE

Lightweight and responsive, our carbon fiber composite sole provides efficient power transfer without sacrificing comfort.

▲ HIGH TRANSPIRATION

Special aeration holes on the upper and on the tongue to keep the feet fresh.

▲ FULL CARBON SOLE

Totally carbon sole composed of 6 intertwined layers. Thanks to this sole the CR1 transmits every watt directly onto the pedals.

▲ FITTING

Slim fit to satisfy the very demanding customers.

▲ SUPER GRIP LINING

"Cat tongue" lining to avoid slipping.



FULL CARBON SOLE

CARBOCOMP SOLE

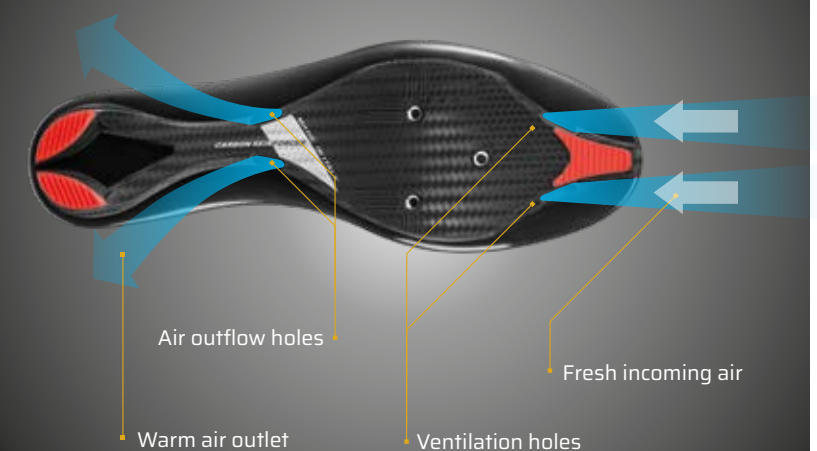


CV1 BLACK



CV1 BROWN

▲ HIGH VENTILATION SYSTEM



Air outflow holes

Fresh incoming air

Warm air outlet

Ventilation holes

ROAD

CV2

Full Carbon Sole version

▲ SIZES

37 | 38 | 39 | 40 | 41 | 41,5 | 42 | 42,5 | 43 | 43,5 |
44 | 44,5 | 45 | 45,5 | 46

▲ WEIGHT 260 g

▲ RIGIDITY



Carbocomp Sole version

▲ SIZES

37 | 38 | 39 | 40 | 41 | 41,5 | 42 | 42,5 | 43 | 43,5 |
44 | 44,5 | 45 | 45,5 | 46 | 47 | 48

▲ WEIGHT 285 g

▲ RIGIDITY



FULL CARBON SOLE

CARBOCOMP SOLE



CV2 BLACK



CV2 WHITE

▲ The CV2 is a technical shoe with a timeless vintage look. We use a classic laced closure which makes the upper adaptable and adjustable at every point. Entirely handmade in Italy with high-quality microfiber for optimal ventilation and low weight. The attention to detail and clean lines make this shoe the perfect choice for any L'Eroica-style event!

▲ ROAD CARBOCOMP SOLE

Lightweight and responsive, our carbon fiber composite sole provides efficient power transfer without sacrificing comfort.

▲ FULL CARBON SOLE

Totally carbon sole composed of 6 intertwined layers. Thanks to this sole the CR1 transmits every watt directly onto the pedals.

▲ HIGH TRANSPARATION

Special aeration holes on the upper to keep the feet fresh.

▲ FITTING

Slim fit to satisfy the very demanding customers.

▲ SPECIAL PROFILE

Plastic heel with high restraining profile.

▲ SUPER GRIP LINING

"Cat tongue" lining to avoid slipping.

▲ ROAD CARBOCOMP SOLE

Lightweight and responsive, our carbon fiber composite sole provides efficient power transfer without sacrificing comfort.

Anti-torque reinforced area

High ventilation system





CRONO

MTB/GRAVEL LINE 2026

CRONOS
WORTH IT



MTB / GRAVEL / TOUR

CX1

▲ SIZES

37 | 38 | 39 | 40 | 41 | 41,5 | 42 | 42,5 | 43 | 43,5 | 44 | 44,5 | 45 | 45,5 | 46

▲ WEIGHT

300 g

▲ SOLE

MTB CARBOCOMP

▲ FITTING

Slim fit to satisfy the very demanding customers.

▲ RIGIDITY



BOA®

▲ Whether it's XC racing, gravel, or cyclocross, the CX1 is a lightweight racing shoe for all terrains, and we constructed it for hard riding in demanding rugged conditions. Extremely robust with anti-tear rubber protection in the front and the TPU heel against abrasions. We use a super breathable and light microfiber combined with the MULTI CONTACT CLOSURE SYSTEM to ensure unmatched stability and comfort. Two BOA® Li2 come with a coated replaceable steel adjustment wire. Easy and quick to micro-adjust also while riding. The CARBOCOMP sole delivers excellent grip in muddy and challenging parts of the course.

▲ MTB CARBOCOMP SOLE

Carbon composite sole and reinforced nylon. Lightweight and responsive, provides efficient power transfer without sacrificing comfort.

▲ SPD COMPATIBLE

Universal SPD system for quick hooking.

▲ NO TONGUE MORE COMFORT

Senza lingua interna non ci sono spessori fastidiosi.

▲ SPECIAL PROFILE

Plastic heel with high restraining profile.

▲ HIGH TRANSPARATION

Special aeration holes on the upper to keep the feet fresh.



Tested pins for all the MTB soles included.



CX1 BLACK



CX1 GREEN



CX1 GREY



CX1 RED



▲ MULTICONTACT CLOSURE SYSTEM

It improves pedalling and increases power output because the foot stays in the correct position. It provides a locked-in feel yet increased comfort. The system adapts to the foot without any increased pressure points.

BENEFITS:

- PERFECT FIT
- MAXIMUM POWER
- COMFORT AND PERFORMANCE



MTB / GRAVEL / TOUR

CX2

▲ SIZES

37 | 38 | 39 | 40 | 41 | 41,5 | 42 | 42,5 | 43 | 43,5 | 44 | 44,5 | 45 | 45,5 | 46

▲ WEIGHT

295 g

▲ SOLE

MTB CARBOCOMP

▲ FITTING

Slim fit to satisfy the very demanding customers.

▲ RIGIDITY



BOA®

▲ Breathable and light microfiber makes the CX2 a superlight race shoe, at the same time incredibly robust thanks to the tear-resistant material in the toe and the TPU heel on the back. It's equally suited for XC racing, gravel, or cyclocross with the micrometric BOA® Fit System L6 closure system. The BOA® Fit System L6 features a coated steel cable, allowing you to adjust the shoe precisely. The internal tongue provides extra comfort, and we use special material in the inner tongue that adapts to the foot's shape during riding. We laser cut the holes to increase ventilation and comfort.

▲ SPECIAL PROFILE

Plastic heel with high restraining profile.

▲ HIGH TRANSPIRATION

Special aeration holes on the upper and the tongue to keep the feet fresh.

▲ SPD COMPATIBLE

Universal SPD system for quick hooking.

▲ MTB CARBOCOMP SOLE

Carbon composite sole and reinforced nylon. Lightweight and responsive, provides efficient power transfer without sacrificing comfort.



CX2 BLACK



CX2 GREY



CX2 GREEN





MTB / GRAVEL / TOUR

CX2.5

▲ SIZES

37 | 38 | 39 | 40 | 41 | 41,5 | 42 | 42,5 | 43 | 43,5 | 44 | 44,5 | 45 | 45,5 | 46

▲ WEIGHT

295 g

▲ SOLE

MTB CARBOCOMP

▲ FITTING

Slim fit to satisfy the very demanding customers.

▲ RIGIDITY



BOA®

▲ The Crono Arch Wrap System independently cradles your arch for optimal support and comfort, while the rigid construction and BOA® Fit System L6 deliver explosive power transfer. Perfect for XC racing, gravel, or cyclocross, this shoe features a micro-adjustable BOA® L6 system with a coated steel cable for a precision fit. The internal tongue, crafted with adaptive materials, provides exceptional comfort.



▲ SOCK-LIKE FIT

Sock-like fit with our tongue-free design.



▲ HIGH TRANSPIRATION

Special aeration holes on the upper and the tongue to keep the feet fresh.



▲ ARCH WRAP SYSTEM

The Crono Arch Wrap System (BOA® L6 dials) distributes pressure independently for comfort and efficient pedalling.



▲ MTB CARBOCOMP SOLE

Carbon composite sole and reinforced nylon. Lightweight and responsive, provides efficient power transfer without sacrificing comfort.



Tested pins for all the MTB soles included.



CX2.5 BLACK



CX2.5 GREY



CX2.5 WHITE



▲ MULTICONTACT CLOSURE SYSTEM

It improves pedalling and increases power output because the foot stays in the correct position. It provides a locked-in feel yet increased comfort. The system adapts to the foot without any increased pressure points.

BENEFITS:

- PERFECT FIT
- MAXIMUM POWER
- COMFORT AND PERFORMANCE



ROAD

CKX3

▲ SIZES

37 | 38 | 39 | 40 | 41 | 41,5 | 42 | 42,5 | 43 | 43,5 | 44 | 44,5 | 45 | 45,5 | 46 | 47 | 48

▲ WEIGHT

300 g

▲ SOLE

MTB CARBOCOMP

▲ FITTING

Slim fit to satisfy the very demanding customers.

▲ RIGIDITY



BOA®

▲ A shoe loaded with features, built with a technical Knit fabric made from a particular intertwining of multi-layer polyester yarns. That makes the shoe not only light but also more breathable and comfortable. The characteristic looks set it apart from other models in a fresh and elegant style. The upper's internal part wraps independently around the foot's arch without affecting the position and comfort of the rest of the foot. The BOA® Fit System L6 closure system is easy to adjust for perfect comfort and fit.

▲ ROAD CARBOCOMP SOLE

Lightweight and responsive, our carbon fiber composite sole provides efficient power transfer without sacrificing comfort.

▲ NO TONGUE MORE COMFORT

Without internal tongue there are no annoying thicknesses.

▲ LIGHT AND BREATHABLE

The special construction material of the upper makes it light and breathable.

▲ BOA® FIT SYSTEM L6

BOA® Fit System L6 locking system.

▲ ARCH WRAP SYSTEM

The Crono Arch Wrap System (with BOA® Fit System L6 locking system) distributes pressure independently for comfort and efficient pedalling.



▲ KNIT CONSTRUCTION

The knit is a special multi-layered weave of yarn that makes the shoe breathable and particularly comfortable.



CK3



▲ MULTICONTACT CLOSURE SYSTEM

It improves pedalling and increases power output because the foot stays in the correct position. It provides a locked-in feel yet increased comfort. The system adapts to the foot without any increased pressure points.

BENEFITS:

- PERFECT FIT
- MAXIMUM POWER
- COMFORT AND PERFORMANCE



MTB / GRAVEL / TOUR

CX3

▲ SIZES

37 | 38 | 39 | 40 | 41 | 41,5 | 42 | 42,5 | 43 | 43,5 | 44 | 44,5 | 45 | 45,5 | 46 | 47 | 48

▲ WEIGHT

290 g

▲ SOLE

MTB CARBOCOMP

▲ FITTING

Comfort fit.

▲ RIGIDITY



BOA®

▲ One of the most popular models in the CRONO MTB range is the CX3. The New version comes with the advantages of the MULTI CONTACT CLOSURE SYSTEM. Optimal breathability is obtained thanks to a large number of ventilation holes. The closure BOA L6 Fitsystem is installed in the upper flap to guarantee excellent comfort, ensuring the foot stays anchored to the sole with a firm heel grip. Total control at a very affordable price.

▲ CARBOCOMP SOLE

Carbon composite sole and reinforced nylon. Lightweight and responsive, provides efficient power transfer without sacrificing comfort.

▲ SPD COMPATIBLE

Universal SPD system for quick hooking.

▲ HIGH TRANSPIRATION

Special aeration holes on the upper to keep the feet fresh.

▲ SPECIAL PROFILE

Plastic heel with high restraining profile.

▲ SUPER GRIP LINING

"Cat tongue" lining to avoid slipping.

SUITABLE FOR
GRAVEL
GRAVEL BIKES

Tested pins for all the MTB soles available upon request.



CX3 BLACK/GOLD



CX3 BLACK/SILVER



CX3 WHITE



▲ MULTICONTACT CLOSURE SYSTEM

It improves pedalling and increases power output because the foot stays in the correct position. It provides a locked-in feel yet increased comfort. The system adapts to the foot without any increased pressure points.

BENEFITS:

- PERFECT FIT
- MAXIMUM POWER
- COMFORT AND PERFORMANCE

MTB / GRAVEL / TOUR



CX4

▲ SIZES

37 | 38 | 39 | 40 | 41 | 41,5 | 42 | 42,5 | 43 | 43,5 | 44 | 44,5 | 45 | 45,5 | 46 | 47 | 48

▲ WEIGHT

305 g

▲ SOLE

MTB CARBOCOMP

▲ FITTING

Comfort fit.

▲ RIGIDITY



▲ The new CX4 is an affordable shoe with an innovative design. A double Velcro fastening wraps around the foot, and the two straps adjust the upper and lower part of the shoe separately for a snug and comfortable fit. Highly breathable and scratch-resistant material makes the shoe lighter and more robust. The TPU heel on the back adds even more robustness. Our CARBO-COMP sole delivers excellent grip in muddy and challenging parts of the course. The CR4 is a shoe for riders who seek simplicity and lightness, whether it's XC racing, gravel, or cyclocross.

▲ CARBOCOMP SOLE

Carbon composite sole and reinforced nylon. Lightweight and responsive, provides efficient power transfer without sacrificing comfort.

▲ SPD COMPATIBLE

Universal SPD system for quick hooking.

▲ SUPER GRIP LINING

"Cat tongue" lining to avoid slipping.

▲ SPECIAL PROFILE

Plastic heel with high restraining profile.



Tested pins for all the MTB soles available upon request.



CX4 BLACK



CX4 WHITE

▲ VELCRO WRAPS

Double Velcro fastening wraps around the foot to adjust the upper and lower part of the shoe.





MTB / GRAVEL / TOUR

CG1

▲ SIZES

37 | 38 | 39 | 40 | 41 | 41,5 | 42 | 42,5 | 43 | 43,5 | 44 | 44,5 | 45 | 45,5 | 46 | 47 | 48

▲ WEIGHT

265 g

▲ SOLE

MTB CARBOCOMP

▲ FITTING

Comfort fit.

▲ RIGIDITY



▲ We believe that Gravel riding is a bit like philosophy. We designed the CG1 with a timeless vintage look and a classic laced closure. It makes the upper adaptable and adjustable at every point, super useful when exploring trails, routes, and cities off and on the bike, always with style. The grippy CARBO-COMP sole handles mud and is rigid for challenging parts of the course. A TPU heel on the back adds even more robustness and protection. Entirely handmade in Italy with high-quality microfiber for optimal ventilation and low weight for those long days in the saddle. We supply the CG1 with different coloured sets of laces in the box.

▲ SPECIAL PROFILE

Plastic heel with high restraining profile.

▲ SUPER GRIP LINING

"Cat tongue" lining to avoid slipping.

▲ SPD COMPATIBLE

Universal SPD system for quick hooking.

▲ HIGH TRANSPARATION

Special aeration holes on the upper to keep the feet fresh.

SUITABLE FOR
GRAVEL
GRAVEL BIKES

▲ Three laces of different colors are present in the package. Black, Red, Yellow



CG1



▲ ROAD CARBOCOMP SOLE

Carbon composite sole and reinforced nylon. Lightweight and responsive, provides efficient power transfer without sacrificing comfort.



Design for maximum discharge of dirt

Special Grip Area

Reinforced bearing for stud

Increased tip to gain grip

MTB / GRAVEL / TOUR

CG2

▲ SIZES

38 | 39 | 40 | 41 | 42 | 43 | 44 | 45 | 46 |

▲ WEIGHT

395 g

▲ SOLE

VIBRAM® WOLFTRAXW

▲ FITTING

Very comfortable fitting.

▲ RIGIDITY



BOA®



▲ The CG2 is suitable for a wide range of activities like Gravel riding, Off-Road riding, Bike Packing, E biking and more. It's our most versatile model. The Vibram® WOLFTRAX outer sole is SPD ready and thanks to its engineering, the sole is rigid for efficient pedalling, but it's also flexible enough for walking. Its functional design and special rubber compounds provide superior grip and traction when walking, while the EVA midsole provides stability and comfort. The Form TX BOA® loops ensure a perfect fit, and the BOA L6 Fit System is easily micro-adjusted on the fly. The CG2 has a reinforced toe and the heel parts in a solid anti-abrasion material to resist ripping or tearing.

▲ SPD COMPATIBLE

Universal SPD system for quick hooking.

▲ SUPER GRIP LINING

"Cat tongue" lining to avoid slipping.

SUITABLE FOR
GRAVEL
GRAVEL BIKESSUITABLE FOR
ELECTRIC BIKES

CG2 BLACK



CG2 GREY

▲ VIBRAM® WOLFTRAXW SOLE

Sharp lugs to empower
traction and brakingFlat area for grip and stability
on pedalOptimized shape to easy clip
IN/OUT



CRONO

WINTER LINE 2026

CRONOS



MTB / ROAD

CW1

▲ SIZES

37 | 38 | 39 | 40 | 41 | 41,5 | 42 | 42,5 | 43 | 43,5 | 44 | 44,5 | 45 | 45,5 | 46 | 47 | 48

▲ SOLE

ROAD CARBOCOMP (340gr)

MTB CARBOCOMP (350gr)

▲ FITTING

Comfort fit.

▲ RIGIDITY (ROAD)



▲ RIGIDITY (MTB)



BOA® | PRIMALOFT®

▲ We designed the CW1 for colder weather conditions. We have constructed a tight-fitting performance shoe internally lined with Primaloft® fleece to contain heat, and we use water-repellent lycra for the outer part. We also make the insole from Primaloft® for that extra comfort. The BOA® Fit System L6 features a coated steel cable perfectly wrapping the foot, which can be tightened in 1mm adjustment increments anytime needed. xtremely robust with anti-tear rubber protection in the front and the TPU heel against abrasions. The shoe is available in two different versions for either road or offroad.

▲ CARBOCOMP SOLE

Carbon composite sole and reinforced nylon. Lightweight and responsive, provides efficient power transfer without sacrificing comfort.

▲ SPD COMPATIBLE

Universal SPD system for quick hooking.

▲ THERMIC INSOLE

Special insole to keep the foot warm.

▲ ROAD CARBOCOMP



▲ MTB CARBOCOMP



Tested pins for all the MTB soles available upon request.



CW1

▲ SPECIFIC WINTER SHOES



MTB / GRAVEL

CW1E

▲ SIZES

38 | 39 | 40 | 41 | 42 | 43 | 44 | 45 | 46 |

▲ WEIGHT

395 g

▲ SOLE

VIBRAM® WOLFTRAXW

▲ FITTING

Very comfortable fitting.

▲ RIGIDITY



BOA®



PRIMALOFT®

▲ The CW1E is designed with the same upper as the CW1 but with a Vibram® WOLFTRAX outer sole. The sole is SPD-ready, and thanks to its engineering, the sole is rigid for efficient pedalling, but it's also flexible enough for walking. Its functional design and unique rubber compounds provide superior grip and traction when walking, while the EVA midsole provides stability and comfort. The Primaloft® fleece contains heat, and we use water-repellent lycra for the outer part, while the Primaloft® insole guarantees added comfort. The BOA® Fit System L6 features a coated steel cable perfectly wrapping the foot, which can be tightened in 1mm adjustment increments anytime needed. Extremely robust with anti-tear rubber protection in the front and the TPU heel against abrasions.

▲ SPD COMPATIBLE

Universal SPD system for quick hooking.

▲ THERMIC INSOLE

Special insole to keep the foot warm.

SUITABLE FOR
GRAVEL
BIKESSUITABLE FOR
ELECTRIC
BIKES

CG2 GREY

▲ VIBRAM® WOLFTRAXW SOLE

Sharp lugs to empower
traction and brakingFlat area for grip and stability
on pedalOptimized shape to easy clip
IN/OUT



CRONO

SPECIAL LINE 2026

CRONOS

TRIATHLON

CT1



▲ We have constructed the CT1 for Triathlon racing and use two Velcro straps easily adjusted for a snug and comfortable fit. Quick and super easy step-in is made possible thanks to a large and inverted top strap during tri-racing with the help of the rear strap. We even added a side strap to put the shoe in a race-ready position after the swim. The foot must dry quickly during racing, and we chose special materials for that, and an anti-slip lining keeps the foot in the correct position for increased performance and comfort.

▲ "READY TO START" TECHNOLOGY

System designed to speed up the fitting with open shoe and already attached to the pedal.

▲ HIGH TRANSPIRATION

Special aeration holes on the upper to keep the feet fresh.

▲ FITTING

Slim fit to satisfy the very demanding customers.

▲ SUPER GRIP LINING

"Cat tongue" lining to avoid slipping.



CT1 BLACK



CT1 WHITE



Full Carbon Sole version

▲ SIZES

37 | 38 | 39 | 40 | 41 | 41,5 | 42 | 42,5 | 43 | 43,5 | 44 | 44,5 | 45 |

▲ WEIGHT

235 g

▲ RIGIDITY



Road Carbocomp Sole version

▲ SIZES

37 | 38 | 39 | 40 | 41 | 41,5 | 42 | 42,5 | 43 | 43,5 | 44 | 44,5 | 45 | 45,5 | 46 | 47 | 48

▲ WEIGHT

280 g

▲ RIGIDITY



MTB Carbocomp version

▲ SIZES

37 | 38 | 39 | 40 | 41 | 41,5 | 42 | 42,5 | 43 | 43,5 | 44 | 44,5 | 45 | 45,5 | 46 | 47 | 48

▲ WEIGHT

290 g

▲ RIGIDITY



EVERYDAY USE



DR2

▲ SIZES

38 | 39 | 40 | 41 | 42 | 43 | 44 | 45 | 46 |

▲ WEIGHT

395 g

▲ SOLE

MICHELIN® OUTDOOR

▲ FITTING

Very comfortable fitting.

▲ RIGIDITY



▲ A shoe for everyday use both on and off-bike. Comfortable and breathable 3D mesh, enriched with high-quality microfiber reinforcements, guarantees comfort and exceptional fit. They are also designed for walking and biking since the midsole's stiffness is suitable for bike riding, allowing good force transmission onto the pedals. The MICHELIN sole guarantees quality and grip in all conditions.

▲ DUAL USE

Designed for on and off bike use.

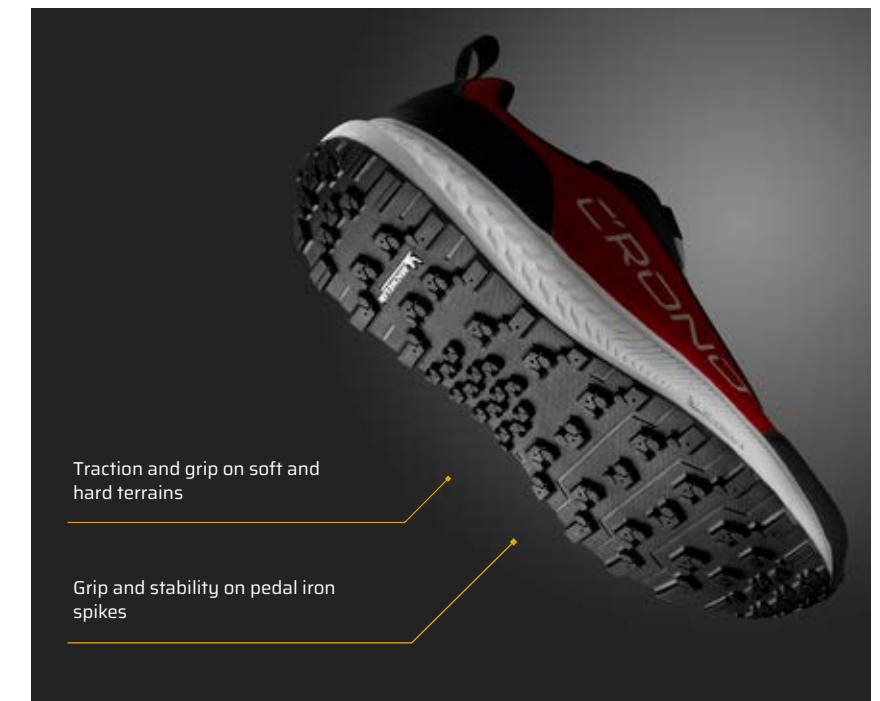
▲ HIGH TRANSPIRATION

Breathable 3D mesh to keep the feet fresh.



DR2 RED

▲ MICHELIN® OUTDOOR SOLE



CR1



- ▲ FITTING: SLIM
- ▲ RIGIDITY: 10-8
- ▲ CLOSURE: BOA Li2
- ▲ MULTICONTACT CLOSURE SYSTEM

CR2



- ▲ FITTING: COMFORT
- ▲ RIGIDITY: 10-8
- ▲ CLOSURE: BOA L6

CR2.5



- ▲ FITTING: COMFORT
- ▲ RIGIDITY: 8
- ▲ CLOSURE: BOA L6
- ▲ MULTICONTACT CLOSURE SYSTEM

CK3



- ▲ FITTING: SLIM
- ▲ RIGIDITY: 8
- ▲ CLOSURE: BOA Li2
- ▲ MULTICONTACT CLOSURE SYSTEM

CR3



- ▲ FITTING: COMFORT
- ▲ RIGIDITY: 8
- ▲ CLOSURE: BOA L6
- ▲ MULTICONTACT CLOSURE SYSTEM

CR4



- ▲ FITTING: COMFORT
- ▲ RIGIDITY: 8
- ▲ CLOSURE: VELCRO

CV1



- ▲ FITTING: SLIM
- ▲ RIGIDITY: 10-8
- ▲ CLOSURE: LACES

CV2



- ▲ FITTING: SLIM
- ▲ RIGIDITY: 10-8
- ▲ CLOSURE: LACES

CX1



- ▲ FITTING: SLIM
- ▲ RIGIDITY: 8
- ▲ CLOSURE: BOA Li2
- ▲ MULTICONTACT CLOSURE SYSTEM

CX2



- ▲ FITTING: SLIM
- ▲ RIGIDITY: 8
- ▲ CLOSURE: BOA L6

CX2.5



- ▲ FITTING: COMFORT
- ▲ RIGIDITY: 8
- ▲ CLOSURE: BOA L6
- ▲ MULTICONTACT CLOSURE SYSTEM

CK3



- ▲ FITTING: SLIM
- ▲ RIGIDITY: 8
- ▲ CLOSURE: BOA Li2
- ▲ MULTICONTACT CLOSURE SYSTEM

CX3



- ▲ FITTING: COMFORT
- ▲ RIGIDITY: 8
- ▲ CLOSURE: BOA L6
- ▲ MULTICONTACT CLOSURE SYSTEM

CX4



- ▲ FITTING: COMFORT
- ▲ RIGIDITY: 8
- ▲ CLOSURE: VELCRO

CG1



- ▲ FITTING: COMFORT
- ▲ RIGIDITY: 8
- ▲ CLOSURE: LACES

CG2



- ▲ FITTING: COMFORT
- ▲ RIGIDITY: 5
- ▲ CLOSURE: BOA L6

CW1



- ▲ FITTING: COMFORT
- ▲ RIGIDITY: 8-8
- ▲ CLOSURE: BOA L6
- ▲ MULTICONTACT CLOSURE SYSTEM

CW1E



- ▲ FITTING: COMFORT
- ▲ RIGIDITY: 6
- ▲ CLOSURE: BOA L6
- ▲ MULTICONTACT CLOSURE SYSTEM

CT1



- ▲ FITTING: SLIM
- ▲ RIGIDITY: 10-8-8
- ▲ CLOSURE: VELCRO

DR2



- ▲ FITTING: COMFORT
- ▲ RIGIDITY: 5
- ▲ CLOSURE: LACES

CRONO is a Brand of SABENA CALZATURIFICIO s.r.l.
Via Ariosto, 14 - 31048 San Biagio di Callalta - TREVISO
Tel. +39 0422 797270 - Fax +39 0422 894570
info@cronoteam.it - www.cronoteam.com

The catalogue is an extract of our complete collection.
Discover the CRONO world by visiting the Internet site www.cronoteam.com.
Prices, colours and specifications are subject to change without prior notice.
Sabena Calzaturificio s.r.l. is not responsible for typographical errors.
Some information may be incorrect due to changes in product specifications that have been made since the start of brochure or price list printing.

Concept: AERA Comunicazione - www.aeranet.com
Photos: Foto Factory, Jonny Livorti, Giofoto, Michele Mondini, Luca Carmosino, Bettinifoto.net, Carlo Landucci, Alex Luise, Mmondini foto.



CAUS WORT

CRONO

cronoteam.com